



PLUMBING PRODUCTS

Commercial and Residential



Trerice offers a variety of products ideally suited for the commercial and residential plumbing markets. Our Tridicators measure both temperature and pressure in hot water boilers. Gas and Water Test Gauges are important tools for passing building inspections. Low Pressure Gauges accurately measure pressures of 10 psi or less in applications such as natural gas. Trerice 800B Utility Gauges and Hydro-Therms are essential to plumbing contractors, providing excellent pressure and temperature measurement at an economical cost.

Since our beginning in 1923, it has been our objective to exceed our customer's needs. We welcome you to challenge Trerice to exceed your expectations, whether it is product application information, technical assistance or to schedule an on-site evaluation.

12950 W. Eight Mile Road • Oak Park • MI 48237-3288

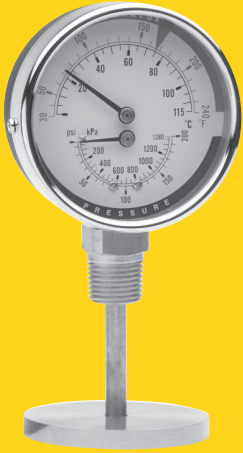
Tel: 1.888.TRERICE • Fax: 1.248.399.7246

Website: www.TRERICE.com E-mail: sales@TRERICE.com

101PLB-1

TRETRICE PLUMBING PRODUCTS

TRIDICATOR



Trerice Tridicators are designed specifically for use with hot water boilers. Because Tridicators provide both temperature and pressure measurement, only one access point to the boiler is required. Available in 2 1/2" and 3 1/2" dial sizes with rear and bottom connections, there is a Trerice Tridicator to suit your needs.

SPECIFICATIONS	2 1/2" TRIDICATOR	3 1/2" TRIDICATOR
Model	140 2 1/2" Rear Connection 142 2 1/2" Rear Connection with lag	144 3 1/2" Bottom Connection 146 3 1/2" Rear Connection
Dial Size	2 1/2" (68mm)	3 1/2" (82mm)
Wetted Parts Connection	Bronze tube, brass socket 1/4 NPT	Bronze tube, brass socket 1/2 NPT
Case	Steel, black painted	Steel, black painted
Window	Acrylic	Glass
Pointers	Steel, black painted	Steel, black painted
Ring	Plastic, screwed on	Steel
Temperature Accuracy	3%, Full Scale	3%, Full Scale
Pressure Accuracy	3-2-3% Grade B	3-2-3% Grade B
Maximum Operating Pressure	2/3 of full scale range	2/3 of full scale range
Approximate Shipping Weight	0.3 lbs. (0.14 kg)	0.55 lbs. (0.25 kg)

Part Number	Dial Size	Connection	Range
PTC14001	2 1/2" (68mm)	1/4 NPT Rear	30° to 240° F/C & 0 to 75 psi/kPa
PTC14007	2 1/2" (68mm)	1/4 NPT Rear	60° to 320° F/C & 0 to 75 psi/kPa
PTC14201	2 1/2" (68mm)	1/4 NPT Rear w/lag	30° to 240° F/C & 0 to 75 psi/kPa
PTC14401	3 1/2" (82mm)	1/2 NPT Bottom	30° to 240° F/C & 0 to 75 psi/kPa
PTC14403	3 1/2" (82mm)	1/2 NPT Bottom	30° to 240° F/C & 0 to 100 psi/kPa
PTC14405	3 1/2" (82mm)	1/2 NPT Bottom	30° to 240° F/C & 0 to 200 psi/kPa
PTC14601	3 1/2" (82mm)	1/2 NPT Rear	30° to 240° F/C & 0 to 75 psi/kPa
PTC14603	3 1/2" (82mm)	1/2 NPT Rear	30° to 240° F/C & 0 to 100 psi/kPa
PTC14605	3 1/2" (82mm)	1/2 NPT Rear	30° to 240° F/C & 0 to 200 psi/kPa

HYDRO-THERM



The Trerice Hydro-Therm is the ideal instrument for measurement of hot or chilled water in hydronic systems. The blue, organic "spirit" fill is easily read without the environmental concerns of mercury. The sturdy Valox® case is available in rigid straight and rigid 90° angle configurations. The 2" stem makes this the perfect instrument for smaller pipeline applications. A 1/2 NPT brass thermowell is included.

SPECIFICATIONS	HYDRO-THERM
Model	HT30 Rigid Straight HT31 Rigid 90° Angle
Scale Size	5 1/2"
Case	Valox®
Stem	Brass
Connection	1/2 NPT brass thermowell (included)
Window	Acrylic
Tube	Lens front, magnifying type
Scale	Aluminum, white background with black graduations and markings
Top Plate	ABS
Accuracy	2%
Approximate Shipping Weight	0.5 lbs. (0.23 kg)

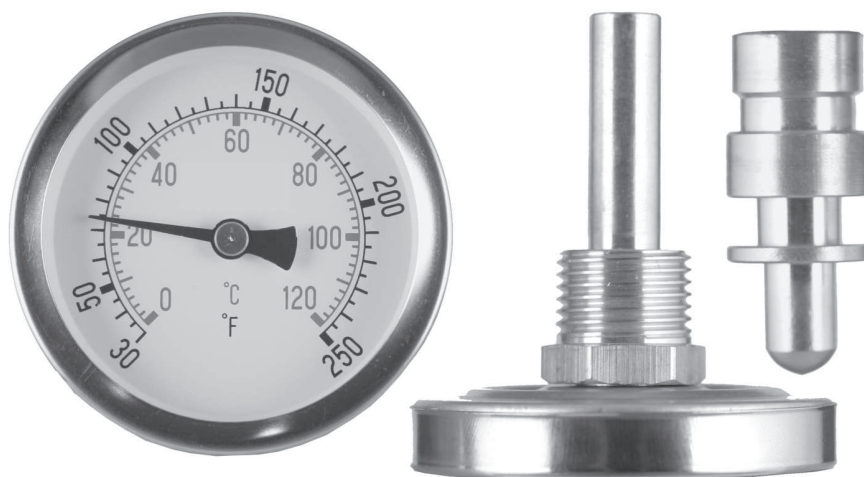
Part Number	Case Configuration	Range	Figure Intervals	Minor Division
HT3041	Rigid Straight	-40° to 110 F/C	20° F / 10° C	2° F / 1° C
HT3047	Rigid Straight	30° to 240 F/C	20° F / 20° C	2° F / 2° C
HT3141	Rigid 90° Angle	-40° to 110 F/C	20° F / 10° C	2° F / 1° C
HT3147	Rigid 90° Angle	30° to 240 F/C	20° F / 20° C	2° F / 2° C



Economy Bimetal Thermometer

Plumbing Products

The Trerice "Econo-Met" thermometer is both an accurate and cost effective way to measure hot water in hydronic systems. The 2" stem make this the ideal instrument where there are space restrictions. An included 1/2 NPT brass thermowell or 3/4 NPT brass sweatwell provide alternate ways for installation.



SPECIFICATIONS

ECONOMY BIMETAL THERMOMETER

Model	PEB130 Economy Bimetal with 1/2 NPT Brass Thermowell PEB132 Economy Bimetal with 3/4 NPT Brass Sweatwell
Dial Size	2 1/2" (63mm)
Case	Zinc Plated steel
Ring	304 Stainless steel
Stem	Brass, 9mm diameter
Coil	Bimetallic
Connection	1/2 NPT Brass thermowell or brass sweatwell for 3/4 NPT Tee
Window	Glass, hemetically sealed
Pointer	Aluminum black painted
Dial Face	Aluminum, white background with black & red graduations and markings
External Reset	Yes
Accuracy	2% Full Scale
Approximate Shipping Weight	0.3 lbs. (0.14 kg)

Part Number	Connection	Range
PEB13027	1/2 NPT Brass Thermowell	0° to 250° F/C
PEB13227	3/4 NPT Brass Sweatwell	0° to 250° F/C

12950 W. Eight Mile Road • Oak Park • MI 48237-3288

Tel: 1.888.TRERICE • Fax: 1.248.399.7246

Website: www.TRERICE.com E-mail: sales@TRERICE.com

TRERICE PLUMBING PRODUCTS

Along with our line of plumbing products, we would like to introduce you to three of our most popular items. To see our complete line of pressure and temperature instrumentation and controls visit our website at www.trerice.com.



SX9 Light Powered Digital Thermometer

The Trerice SX9 is ideally suited for replacement of existing "mercury-in-glass" glass thermometers in environmentally conscious applications. It features a rugged cast-aluminum case and an easy to read LCD display. The unique Min/Max feature provides an instant recall of minimum and maximum temperatures over a given time period and is easily reset.



600CB Contractor Pressure Gauge

The Trerice 600CB Contractor Gauge is the industry standard. It is the most frequently specified HVAC pressure gauge within the construction industry. This gauge offers high reliability and accuracy (1%) at a moderate price. The 600CB is furnished with a cast aluminum case and lead free wetted parts.



91000 Series Temperature Regulator

The 91000 Series Temperature Regulator is the preferred choice of OEMs, mechanical contractors and specifying engineers. The 91000 is self operated and requires no external power. It is ideal for regulating the temperature of tanks, process steams and various types of industrial equipment. An indicating dial is available as an option and is used to verify process temperature.



12950 W. Eight Mile Road • Oak Park • MI 48237-3288
Tel: 1.888.TRERICE • Fax: 1.248.399.7246
Website: www.TRERICE.com E-mail: sales@TRERICE.com

TRETRICE PLUMBING PRODUCTS

GAS & WATER TEST GAUGES



Trerice Gas and Water Test Gauges are integral tools for passing building inspections. Once the system has been pressurized, any leaks are visible as a pressure drop on the dial of the Gas Test Gauge. The Water Test Gauge has a 3/4 NPT hose bib connection mounted at 12 o'clock for easy viewing and accurately measures in-line water pressure. A maximum register pointer is available on either gauge having a dial range of 60 psi or greater.

SPECIFICATIONS	GAS TEST GAUGE	WATER TEST GAUGE
Model	120 Gas Test Gauge	122 Water Test Gauge
Dial Size	2" (50mm)	2 1/2" (63mm)
Wetted Parts	Bronze tube, brass socket	Bronze tube, brass socket
Connection	3/4 NPT female	3/4 NPT female hose-bib connection, 12 o'clock mount
Case	Steel, black painted	Steel, black painted
Window	Acrylic	Acrylic
Pointer	Steel, black painted	Steel, black painted
Ring	Steel, black painted	Steel, black painted
Accuracy	3-2-3%, Grade B	3-2-3%, Grade B
Maximum Temperature	150° F (65° C)	150° F (65° C)
Approximate Shipping Weight	0.6 lbs. (0.27 kg)	0.4 lbs. (0.18 kg)

Gas Test Gauge Part Number *	Water Test Gauge Part Number *	Range
PGT12010	-	0 to 15 psi
PGT120190	-	0 to 15 psi/kPa
PGT120191	-	0 to 30 psi/kPa
PGT120192	-	0 to 60 psi/kPa
PGT120193	-	0 to 100 psi/kPa
-	PWT122194	0 to 160 psi/kPa
-	PWT122196	0 to 300 psi/kPa

* Add MAX to any part number for Maximum Registering Pointer. (60 psi and greater only)
Example: PGT120192MAX

LOW PRESSURE GAUGE



Trerice Low Pressure Gauges are essential for accurately measuring low pressures such as natural gas. This gauge employs a diaphragm capsule element to accurately measure pressures of 10 psi or below. The case is drawn steel with brass wetted parts.

SPECIFICATIONS	LOW PRESSURE GAUGE	Part Number	Range
Model	162 Low Pressure Gauge	PLP16201	0 to 15" H ₂ O
Dial Size	2 1/2" (63mm)	PLP16203	0 to 60" H ₂ O
Wetted Parts	Brass diaphragm capsule and socket	PLP16204	0 to 100" H ₂ O
Movement	Brass	PLP16211	0 to 20 oz/in ² / 34" H ₂ O
Connection	Lower male, 1/4 NPT	PLP16221	0 to 3 psi
Case	Steel, black painted	PLP16222	0 to 5 psi
Window	Polycarbonate, snap-in	PLP16223	0 to 10 psi
Pointer	Steel, blank painted		
Dial Face	Aluminum, white background with black graduations and markings		
Accuracy	2%		
Maximum Temperature	140° F (60° C)		
Approx. Shipping Weight	0.5 lbs. (0.23kg)		

TRERICE PLUMBING PRODUCTS

800B UTILITY GAUGE



The Trerice 800B Utility Gauge is designed for general pressure indication requirements. This gauge provides excellent accuracy (1.6% full scale) and reliability at an economical cost. The case is drawn steel and wetted parts are brass.

SPECIFICATIONS	800B UTILITY GAUGE	
Model	800B	
Dial Sizes	1 1/2" (40mm), 2" (50mm), 2 1/2" (63mm), 4" (100mm)	
Wetted Parts	Bronze tube, brass socket	
Movement	Brass	
Connection	1/8 NPT (not available with 4" dial size) 1/4 NPT (not available with 1 1/2" dial size)	
Case	Drawn steel, black finished, stem-mounted flangeless	
Window	Acrylic	
Pointer	Steel, black painted	
Dial Face	Aluminum, white background with black graduations and markings	
Accuracy	1.6% Full Scale	
Maximum Temperature	180° F (82° C)	
Approximate Shipping Weight	1 1/2": 0.2 lbs. (0.09 kg)	2": 0.3 lbs. (0.14 kg)
	2 1/2": 0.3 lbs. (0.14 kg)	4": 0.6 lbs. (0.27 kg)

How To Order (Example 800B 2502 L A 110)

Model	Dial Size	Connection Size	Connection Location	Units of Measure	Range Code
800B	15 1 1/2"	01 1/8 NPT	L Lower	A psi	See Range Table
	20 2"	02 1/4 NPT	B Back	D psi/kPa	
	25 2 1/2"				
	40 4"				

Range Codes	Specific Ranges
010	30" Hg to 0
020	30" Hg to 15 psi
030	30" Hg to 30 psi
040	30" Hg to 60 psi
050	30" Hg to 100 psi
060	30" Hg to 150 psi
070	30" Hg to 300 psi

Range Codes	Specific Ranges
080	0 to 15 psi
090	0 to 30 psi
100	0 to 60 psi
110	0 to 100 psi
120	0 to 160 psi
130	0 to 200 psi
140	0 to 300 psi

Range Codes	Specific Ranges
150	0 to 400 psi
160	0 to 600 psi
180	0 to 1000 psi
190	0 to 1500 psi
200	0 to 2000 psi
210	0 to 3000 psi
220	0 to 5000 psi



12950 W. Eight Mile Road • Oak Park • MI 48237-3288

Tel: 1.888.TRERICE • Fax: 1.248.399.7246

Website: www.TRERICE.com E-mail: sales@TRERICE.com